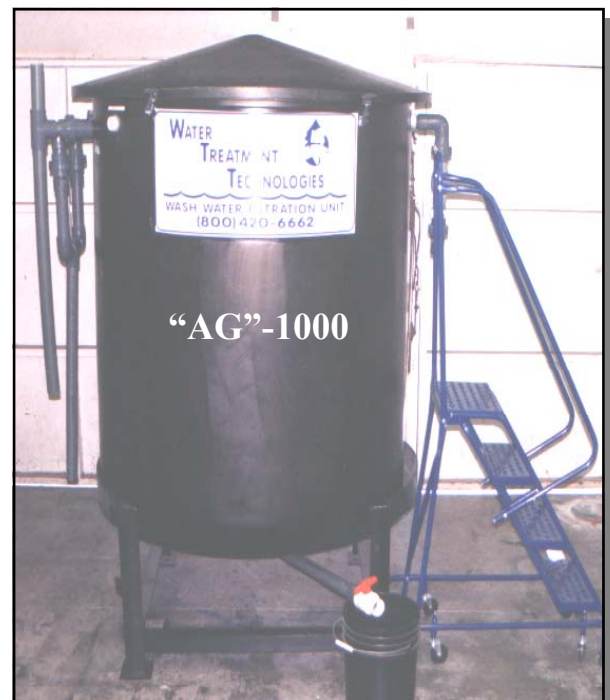


# Above Ground "AG" Units Oil/Water & Solids Separation Units & Clarifiers



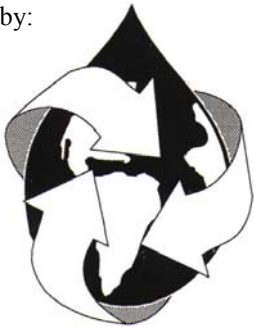
AG/ST Combination Units

- Above Ground "AG" Units
- AG/ST Combination Units
- Pre-Treatment Separators



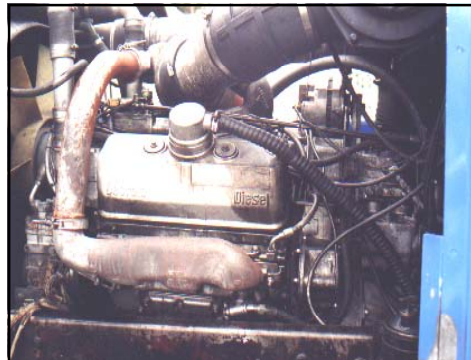
EZ Purge Above Ground "AG"  
Oil/Water & Solids Unit

Manufactured  
by:



**WATER  
TREATMENT  
TECHNOLOGIES, INC.**

- Closed Loop-Zero Discharge Units
- Modular & Moveable Designs



**PERFECT FOR HEAVY OIL & DIRT APPLICATIONS**

# Above Ground "AG" units

*"AG" units are perfect when a below ground pit or clarifier are just too expensive. All units are modular and easily adapt to other Water Treatment Technologies components.*



AG/ST Combination units can be combined to create a Closed Loop "Zero Discharge Unit"



Above ground separator with "ST" water filtration unit, ozone and multi-media polishing system.



AG units connect easily to our "ST" Series Stationary Water Filtration Units

*Our "AG" separation units work great alone or can be used as a Solids Separator/Clarifier for our Stationary "ST" series wash water Filtration units.*

## SIMPLE TO OPERATE

Water Treatment Technologies "AG" Series are made of Roto-molded high density polypropylene. There are no welds to break and are resistant to corrosion and chemicals. Since there are no moving parts in the units, **other than cleaning, there is no maintenance.** All you need to do is hook the system up and deliver your water to the unit. They take it from there.

**Why pay more.....**

## CLEANS GREAT

For oily water applications the "AG" separation units can help eliminate your problems. Each model has long water retention time for standard oil/water separation and sludge dropout. For added separation their also packed full of angled, oil loving coalescing plates, which force the water to rise slowly, thus enhancing the separation process while also preventing channeling.

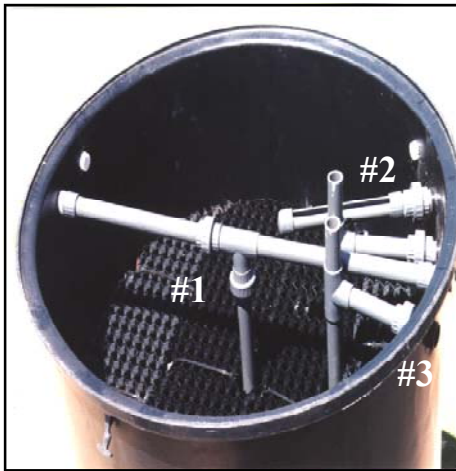
**Why pay more...  
If you don't need to.**

## AFFORDABLE

**Always compare operating & shipping costs!** All the Coalescing materials are washable & reusable, thereby making our Separators work with **NO expensive parts or filters!** The units are also lightweight so they cost you less to ship or move. All materials are corrosion proof, providing a low maintenance, low cost and highly effective Oil/Water & Solids separation unit.

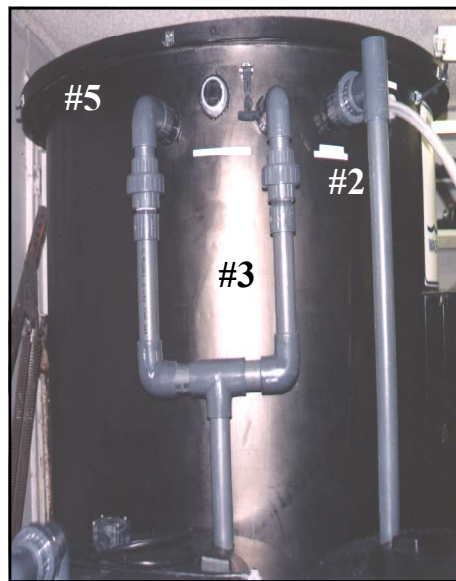
**Why pay more...  
And more, and more.**

# Low Maintenance, Low Cost, Works Great... Why Pay More?



Top inside view

1. Inlet port & downward flow pipe
2. Oil skimmer discharge port
3. Dual manifold discharge ports
4. Bottom discharge port
5. Removable lid w/fasteners



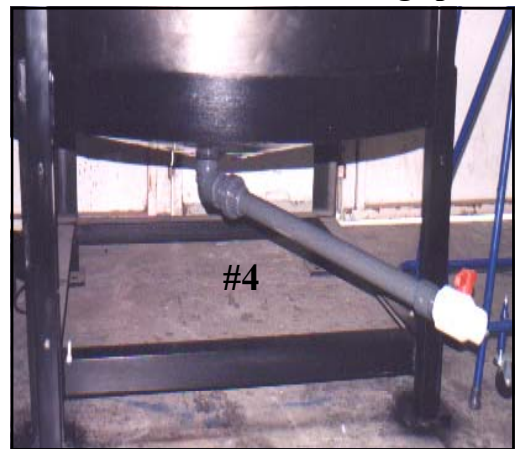
Side discharge ports



Side view of bottom discharge port



Inlet port w/check valve



Bottom discharge port w/flow pipe

## “AG” Unit Views

**Large inlet port w/flow restrictor**  
All P.V.C. used in the unit is ABS Schedule 80 for added strength, durability and UV protection. The flow restrictor is easily accessible for cleaning and allows the flow rate to be adjusted for maximum “Settling Time.”

**Coalescing Plates**  
Specially designed, angled, coalescing plates help separate oil, grease, and dirt from the water. They also slow the flow of the water while also preventing channeling. They are easily removable for cleaning.

**Downward flow pipe**

Sends water to bottom of unit for heavy solids to drop down & oils to begin floating up through the Coalescing plates.

**Cone shaped design**  
This chemical resistant, extra strength design, helps separate the oils and dirt naturally. The easy access 1½ inch P.V.C. gate valves are used for quick and easy removal of heavy solids & sludge's from the bottom of the units.

**Oil Skimmer-Overflow port**  
Located in the top of the unit, the adjustable P.V.C design allows you to easily skim the floating oils from the unit. With no moving parts or motors, it consistently removes oils to be

disposed of through gravity flow.  
**Dual Discharge ports**  
Allows for free flow water discharge from the center of the unit, where the water is the cleanest in the unit.

**Removable Lids & Fasteners**  
Heavy duty, quick release fasteners allow for fast removal of the lid for easy access when servicing or cleaning.

**Modular & Movable**  
The “AG” units flexibility is what makes them so popular. All units are above ground, which eliminates the need for costly construction of below ground pits. When relocating, they can be taken with you thus avoiding additional equipment costs in the

# Above Ground "AG" Oil/Water & Solids Separators

Model	Price	Dimensions	Shipping Weight	Oil Skimmer	Electrical Requirements	Flow Rate
<b>AG-800</b>		36"W x 84"H (With Stand)	175 Lbs.	P.V.C. Adjustable	None Your sump pump	1-8 G.P.M.
<b>AG-1000</b>		42"W x 84"H (With Stand)	195 Lbs.	P.V.C. Adjustable	None Your sump pump	1-10 G.P.M.
<b>AG-1200</b>		48"W x 84"H (With Stand)	200 Lbs.	P.V.C. Adjustable	None Your sump pump	1-12 G.P.M.
<b>AG-1500</b>		58"W x 84"H (With Stand)	275 Lbs.	P.V.C. Adjustable	None Your sump pump	1-15 G.P.M.

## AG/ST Series Combinations Available in all Sizes Above

All prices, dimensions & flows subject to change and with added components. All specifications above are approximate. Freight & Tax not included. All units come with a 1 year warranty and produce non-drinkable water. Always check guidelines prior to discharge. 02-01



**Stationary, Sewer Discharge or Closed Loop "ZERO" Discharge Systems.**



**Mobile Water Filtration Units and Water Pickup Devices**



**Multi-Media Polishing Systems**

Water Treatment Technologies offers a complete line of Mobile or Stationary wash water treatment systems and accessories available today. Call your distributor today for more

- Water Tanks
- Sump pumps
- Ozone generators
- Containment Mats
- Vacu-Booms
- Chlorinators
- Chemical pumps
- Cyclonic separators
- Cone tanks
- Oil/Water separators
- Jet water pumps
- Clay filters
- Carbon filters
- polypropylene filters
- D.E. filters
- Sand filters
- Flocculants
- Water Dikes
- Oil skimmers
- And more!



**WATER  
TREATMENT  
TECHNOLOGIES, INC.**

Sales Dept: 800-420-6662 Service: 760-630-9425  
[www.watertreatmenttech.com](http://www.watertreatmenttech.com)  
 1071 Evergreen Lane. Vista, Ca. 92084

Distributed by: